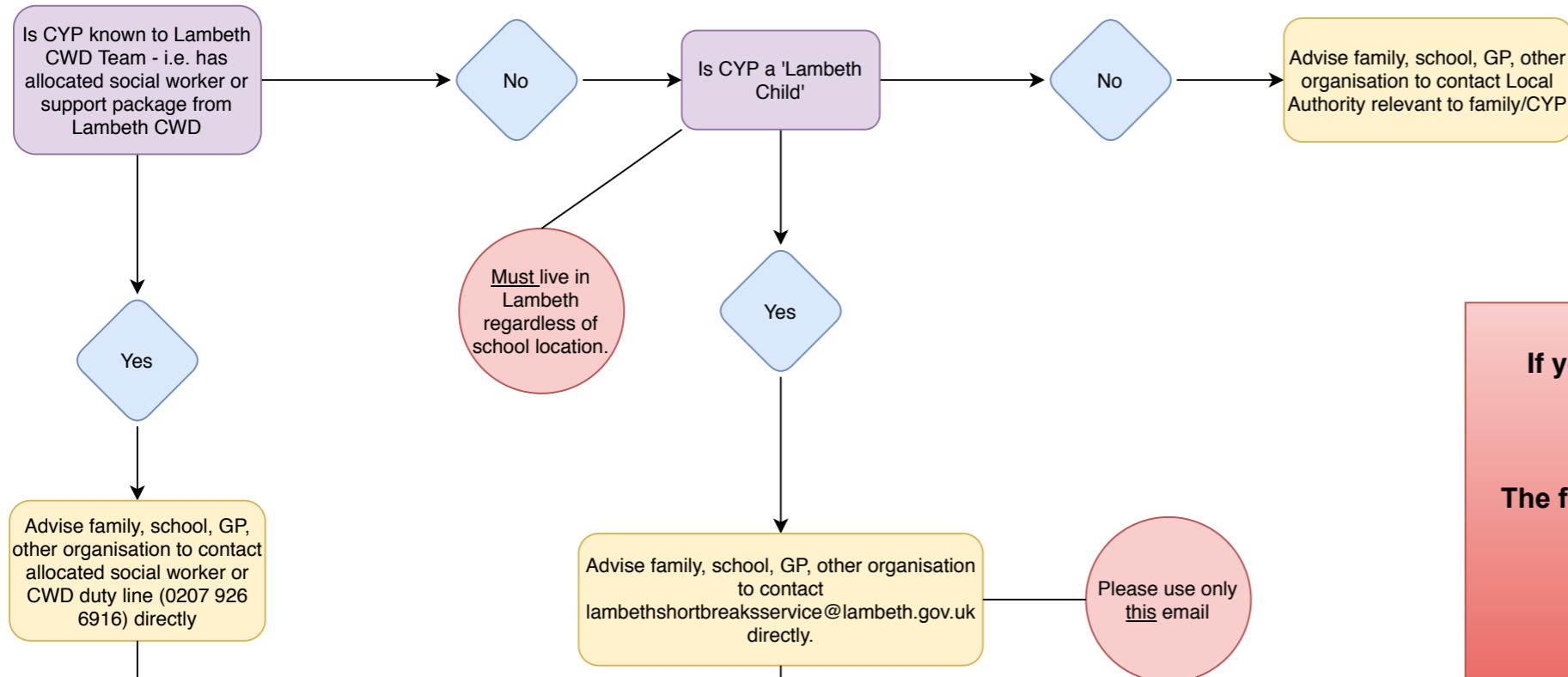


Short Breaks Referrals

New referral contact direct from Family, School, GP, other organisation.



If you are concerned about a child's safety, please complete a MARF (Multi Agency Referral Form) to the IRH (Integrated Referral Hub).

The form is available on the Lambeth Council Website under [Report a concern about a child](#) and should be emailed to helpandprotection@lambeth.gov.uk

Social/Duty Worker will:

- Discuss request with family
- Discuss and seek agreement from CWD management
- If not agreed - SW to communicate this to family and referral party.
- If agreed - SW to identify a provider and seek availability/ability of provider to support
- Submit referral to chosen provider, requesting start date
- Notify short breaks co-ordinator to add to provider monitoring documents

Short Breaks Co-ordinator will:

- Assess eligibility for targeted services through discussion and agreement with CWD Management.
- Contact family with outcome advise of available services and seek service preference from family
- Contact preferred providers for availability and support level ability
- Submit referral to chosen provider, requesting start date
- Add service to provider monitoring documents

Eligibility criteria for targeted short breaks

- Aged 5 -19yrs
- Live in Lambeth
- Have at least 2 moderate, or 1 profound disability
- Not have a package of support from the CWD team